

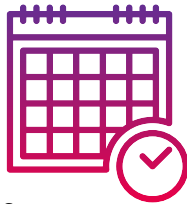


Immigrant Home English Learning Program

Formerly Immigrant & Refugee Women's Program

IMPACT REPORT 2020

For IHELP, which had provided in-home education for 25 years, 2020 proved to be full of challenges and opportunities. It took quickly restructuring program to continue providing one-on-one classes, but in an all-virtual format.



March 2020:

Pandemic causes a shutdown of our in-person classes in students' homes.

April 2020:

A Program Adaptation Committee is established to guide program direction in response to the pandemic.

June 2020:

Staff finishes conversion of program to an all-virtual format, begins training volunteers to teach online, and resumes new student/teacher matches.

July-December 2020:

Networking with other immigrant service providers to meet needs of students, conversion and resumption of student evaluations online, continued recruitment of new program participants.



337

STUDENTS SERVED

354

VOLUNTEER TEACHERS



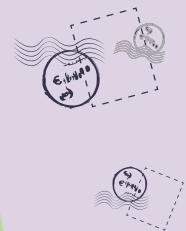
Women disproportionately face barriers to learning.

88% of our students in 2020 were female.

Students came from

48

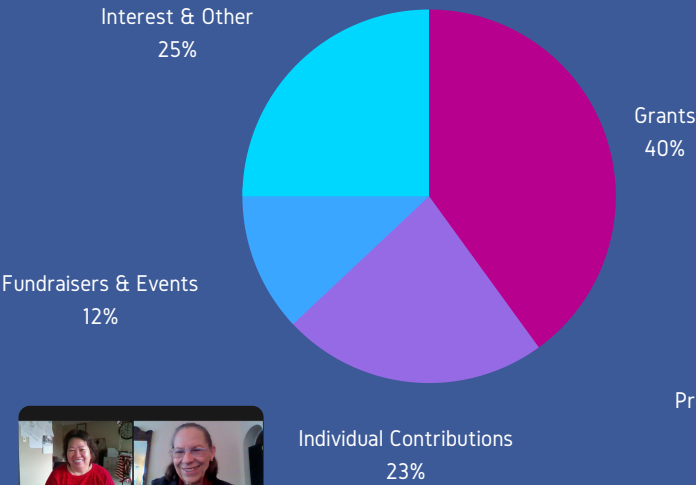
different areas of origin.



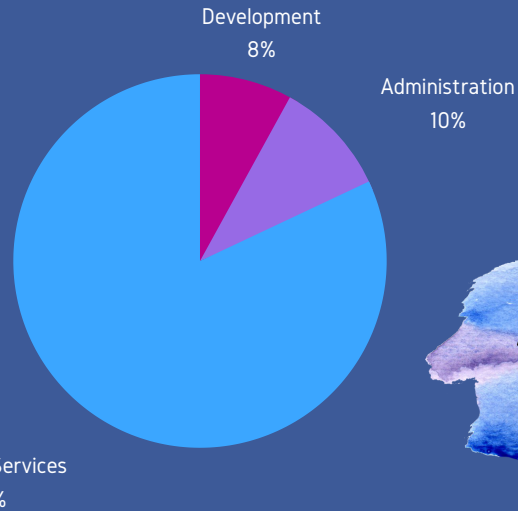
69% of students had children in the 5th grade or younger in their household.



2020 INCOME



2020 EXPENSES



TOTAL INCOME:

\$288,811

TOTAL EXPENSES:

\$291,727

IHELP'S Values



OUR MISSION

IHELP empowers foreign-born adults by providing individualized, in-home English language education and tools for effective navigation of our community.

OUR VISION

A diverse and inclusive community where all immigrants are empowered through language.

GROWTH

We celebrate the strength and resilience of our community members and provide opportunities to question, learn, develop skills, and build confidence as they work towards their personal goals.

CONNECTION

We dismantle societal barriers through personal relationships. We are dedicated to building mutually-beneficial partnerships with like-minded organizations and individuals.

EQUITY

We foster conditions for equity by increasing the agency of English language learners.

COMMUNITY

Everyone benefits from uniting those who are well-established in the community with those who are longing to more fully participate.

LIFE-LONG LEARNING AND CULTURAL HUMILITY

There are many complex issues of racial, economic and cultural justice and they affect each of us differently. We have much to learn and are committed to ongoing growth and understanding. Like our students, who engage with a desire and willingness to learn, we will remain open-minded, humble, and reflective with our education. We commit to put gained knowledge into action for increased justice and equity in our work and within our shared world community.

STAFF

- Julie Fox - Executive Director
- Christina Bowman - Volunteer Manager
- Lizzie Warner - Program Manager
- Sarah Paradoski - Director of Program Development
- Ebtihal Al-Alwi - Program Coordinator
- Nazira Bakhriyeva - Program Coordinator
- Rachel Pozzo - Program Coordinator

BOARD OF DIRECTORS

- Aida Miskic
- Omer Ozyurt
- Daphney Rose Bitanga
- Mary Quandt
- Amie Bossi
- Cate Redfern
- Vaibhav Dabas
- Kayte Rossi
- Celine George
- Mallory Rusch
- Meghana Hermes
- Irene Taranhike
- Andrea Maddox-Dallas
- Brian Wacker



5021 Adkins Ave. St. Louis, MO 63116



314.771.1104



ihelpstl.org



ihelp.stl



ihelp.stl



IHELP STL



company/ihelpstl